



Package Design

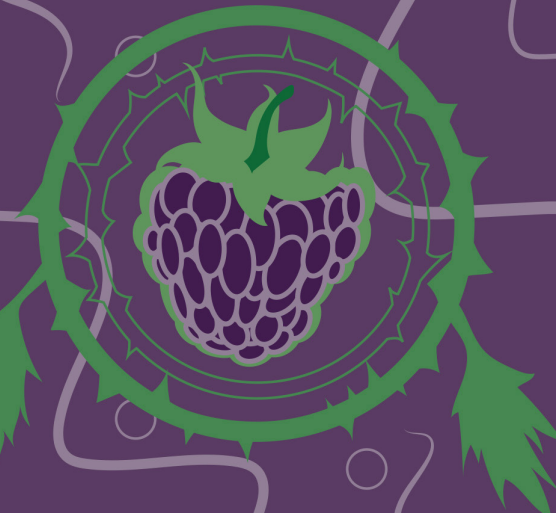


Package Design

This project is focused on appealing a potential buyer with a visual appealing design with connection to the flavor of the beer. With this attempt my style is present with the bold presentation and use of type in a creative way. With the logo's being fun and expressive creating memorable first impression can be the initial push for a buyer.



Farmers Reserve Blackberry



Nutrition Facts

Serving Size 1 beer (12 fl oz)
Servings Per Container 1

Amount Per Serving	
	% Daily Value*
Calories 150	Calories from Fat 0
Total Fat 0g	0%
Saturated Fat	0%
Trans Fat	0%
Cholesterol	0%
Total Carbohydrate 13g	4.7%
Fiber 8g	40%
Protein 1g	

*Percent Daily Values are based on a diet of other people's secrets.

Government Warning:
(1) According to the surgeon general, women should not drink alcoholic beverages during pregnancy because of the risk of birth defects. (2) Consumption of alcoholic beverages impairs your ability to drive a car or operate machinery, and may cause health problems.



ME HIA SC DEP
OR 10 C DEP



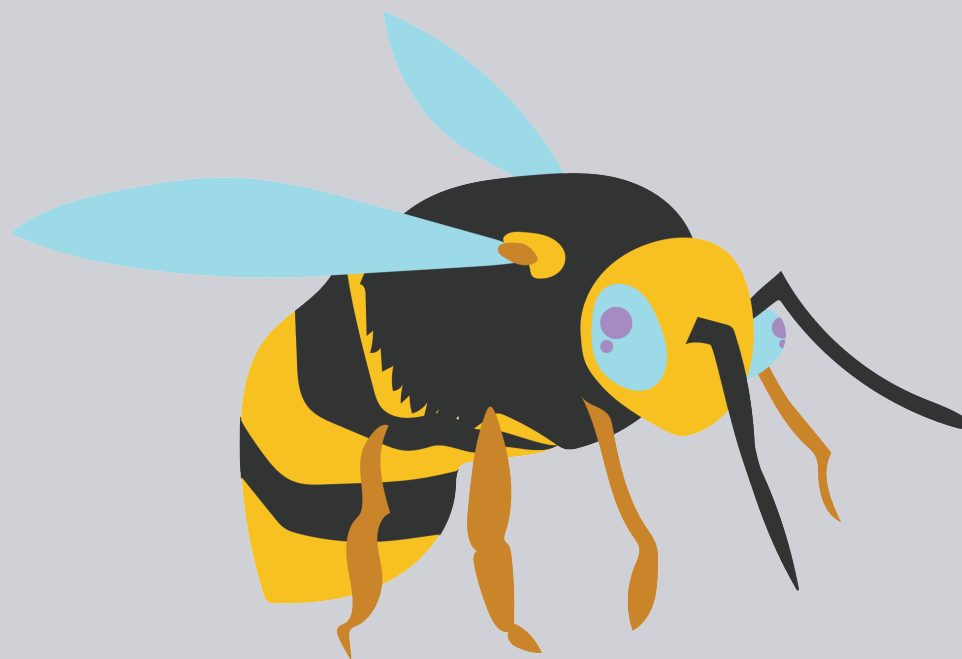
#CSBEVREW

12 fl oz. Blond Sour Ale 7 % ABV

Bottle and distributed by:
Craftwork Brewery
Corvallis, OR 97339



18 2 74 11 5 1178





Visual Identity Design

Keeping with a versatile design and bold up in your face look this logo makes its presence known. The color palette is minimal but in contrast to the aggressiveness of the overall logo creates an emphasis on expression over color. The hues used to appeal to the outside enthusiast and sun bathers or the individual who prefer the life near or by water.

Designing a logo that can be used for every day wear to a sporting attire, my aim is to create design that can be prevalent in more than one setting.





OCEAN
FURY





Logo Design

The street wear fashion is an iconic style established in our popular culture and is a way of expression of their own individualness without having to say a word. Creating an expressive style this design and the bold stand-out presentation of the logo this piece can't be ignored it can only be noticed.

Being bold, loud, and having a strong presence is my style and it can create something that can't be missed. Having the balance of type can open up the type of applications that can be associated with the brand but and overall push for more usage of the brand name.







Gorilla
TROOPS
CLOTHING

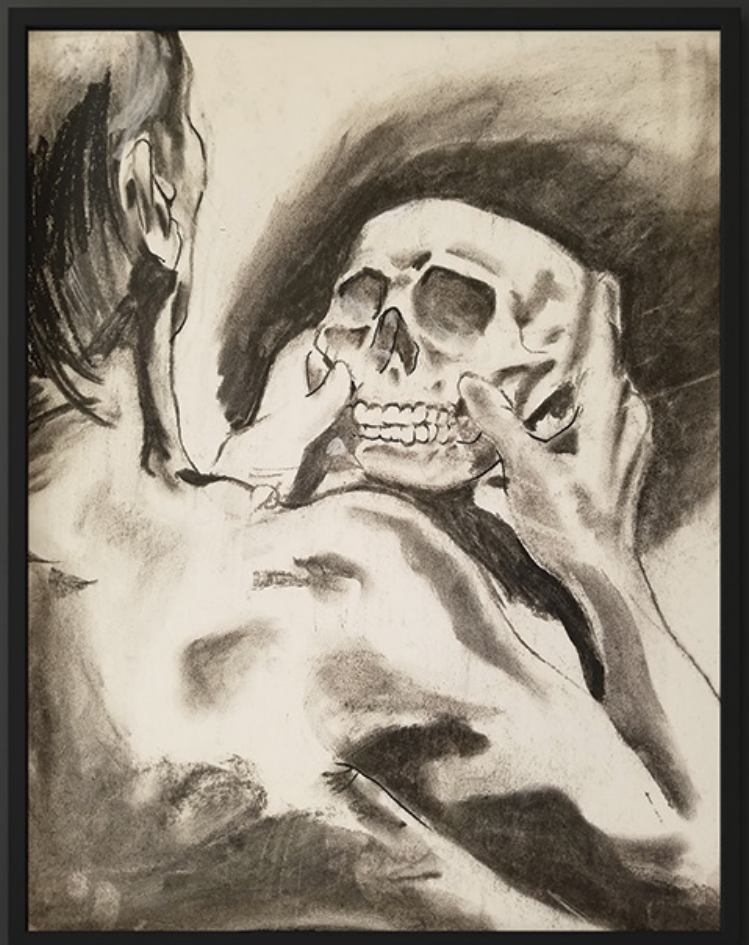


Figure Drawing Series



Keeping to my roots I find myself always returning to pencil and paper to try new techniques and release the ideas trapped inside the universe always in motion in my mind. The human form and the way body expression can be read is a skill, when used to create a piece of artwork it can tell a story which is read with observation. I use of vine charcoal to create a range of values that detail various weights of mass in the given space. Form and shape are going to be foundation but pushing the depth of the piece with value creates an atmosphere of space and dimension.





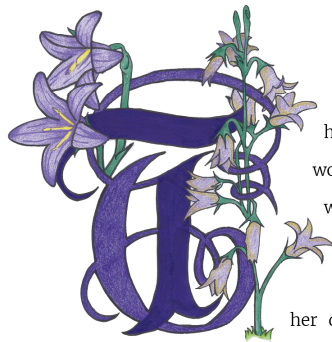


Illustrated Drop Cap

Grimms' Fairy Tales

The Brothers Grimm

Rapunzel



here were once a man and a woman who had long in vain wished for a child. At length the woman hoped that God was about to grant her desire. These people had a little window at the back of their house from which a splendid garden could be seen, which was full of the most beautiful flowers and herbs. It was, however, surrounded by a high wall, and no one dared to go into it because it belonged to an enchantress, who had great power and was dreaded by all the world.

One day the woman was standing by this window and looking down into the garden, when she saw a bed which was planted with the most beautiful

rampion (rapunzel), and it looked so fresh and green that she longed for it, she quite pined away, and began to look pale and miserable. Then her husband was alarmed, and asked: 'What ails you, dear wife?' 'Ah,' she replied, 'if I can't eat some of the rampion, which is in the garden behind our house, I shall die.' The man, who loved her, thought: 'Sooner than let your wife die, bring her some of the rampion yourself, let it cost what it will.'

At twilight, he clambered down over the wall into the garden of the enchantress, hastily clutched a handful of rampion, and took it to his wife. She at once made herself a salad of it, and ate it greedily. It tasted so good to her--so very good, that the next day she longed for it vthree times as much as before. If he was to have any rest, her husband must once more descend into the garden.

In the gloom of evening therefore, he let himself down again; but when he had clambered down the wall he was terribly afraid, for he saw the enchant-



While keeping my style present, I incorporate the story and nature in a design that is beautiful and elegant. Illustrative drop caps from old master's gave me the inspiration to be bold and make a presence while having the type compliment the overall design. The layout portion is very eligible and keeping to the curve of the illustration allowing the padding to do its job providing breathing room. I have multiple styles that I can allow the text to compliment and strong layout keeps the flow of the story steady.

Presented by : Los Santos Entertainment & San Andreas Sound Co.

VICE CITY CAR CLUBS

4th Annual Friends and Family Stars and Cars Night

Family Friendly
Entertainment
Fresh food
Live Performances
Art Galleries
Arts and Crafts

4TH
ANNUAL

- **RAFFLES**
- **CONTEST**
- **PRIZES**

SATURDAY 14 JUNE 2021
8 P.M - 4 A.M



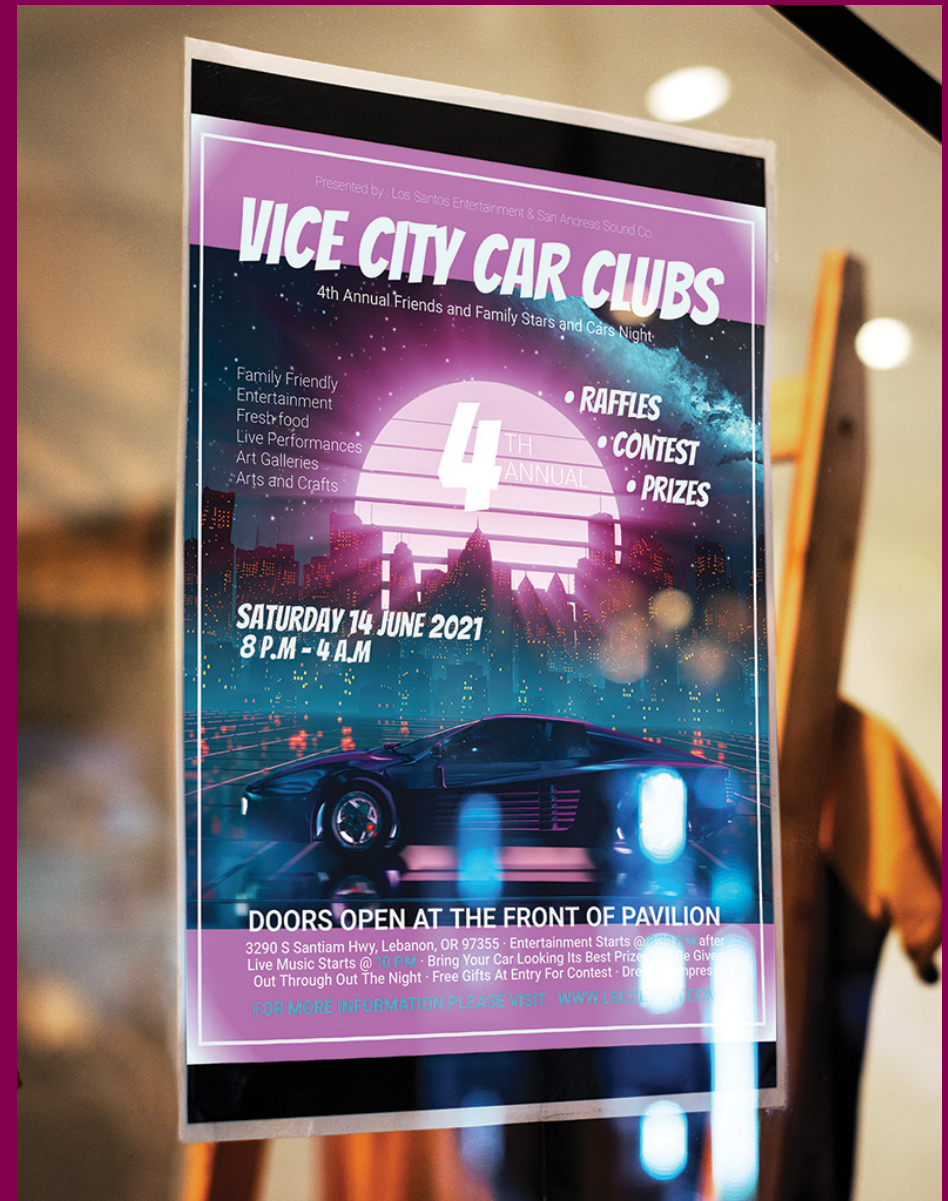
DOORS OPEN AT THE FRONT OF PAVILION

3290 S Santiam Hwy, Lebanon, OR 97355 · Entertainment Starts @ **8:30 P.M** after
Live Music Starts @ **10 P.M** · Bring Your Car Looking Its Best Prizes Will Be Given
Out Through Out The Night · Free Gifts At Entry For Contest · Dress To Impress

FOR MORE INFORMATION PLEASE VISIT WWW.LSCCEVENT.COM

Advertising

The use of attention grabbing graphic elements while being bold and clear will get your event notice. What is done here is a event that the theme is related to the promotion. The main image consist of the car but with the background, the atmosphere is created bringing in the viewer to a cyber punk setting. With that being a big culture interest this will bring viewers in and bring intrigue to the event that is here. With directions on what to expect on the lower section, being clear is key so that no confusion occurs and prevent negative feedback. Bright color palette and sleek car make this poster slightly futuristic but invokes a sense of movement.



Album Design



The bright and colorful rhythm that is from this record is what I wanted to connect with in the overall design. Bright color palette is very custom in the genre and time period that this is from but with a more modern take on the design. The trees and hill like landscape give a setting but with the sun setting give more of a time period that this is and with the music being a nightclub dance music this fits perfect. The emotion provoked should be that of a moving type motion or a feeling of a cool breezy evening coming night time.



Thank You,

Lets chat and converse,
Lets create your new universe.

Reach me @ my.chemeketa.edu
Website @ Paulart.org